

# IGP Product range

Swiss powder coating system  
for high quality and aesthetic  
surface coatings

 swiss quality



Powderful Solutions.



# Improve on your ideas with quality and service

The technical, aesthetic and environmental requirements for surface technology are highly complex and individual. Requirements are constantly increasing. To meet this requirement for individuality at the highest level, IGP offers a complete and extensive range of products for architecture and industry.

## Application fields and substrates

- For exterior and interior applications
- On aluminium, steel, galvanised substrates, heat-sensitive substrates such as MDF, wood, synthetics, glass

## Application and coating processes

- For Corona and Tribo
- Powder coating systems for horizontal and vertical equipment
- Recycling-stable application, thanks to special IGP bonding techniques ("Mica-Bond", "Premium-Bonding")

## Colors and surfaces

- Shades according to standards such as RAL, NCS and customer shades
- Standardised gloss levels: matt, dull matt, silk matt, silk gloss, gloss
- Standardised surfaces: smooth, fine and coarse structure, Hammerschlag

## Effects and additional functions

- Metallic, pearl and iron mica
- Deep-matt, transparent
- Soft-feel-effect
- Thin-layer, electrically conductive, anti-bacterial, abrasion-resistant, heating value optimised, etc.

## IGP COLOR&DESIGN Service portfolio

- General and company specific training and seminar programs
- Application-related consulting on the optimisation of coating and operational activities
- Product, design and color consulting
- Comprehensive test techniques and quality assurance
- Sampling and delivery service

## Comprehensive warranties

- Material-related warranty on request

## Energy-efficient powder varnishes

IGP adopts a responsible approach towards the environment. This is why IGP's R&D department constantly works on developing products that are even more environmentally-compatible in an effort to ensure their high durability and the careful use of resources.



## Marks of quality and approvals

GSB, Qualicoat, Austria, ISO, Ü-sign 1 2



Product tested and approved for the quality trade-mark



# The right powder paint system for every application

## Exterior Facade

### IGP-PFC

#### 91 line

Fluoropolymer powder varnish for exacting requirements with regard to UV weathering.

### IGP-HWF

#### 57 line, HWF<sup>superior</sup>

Outstanding, extremely weather-resistant powder varnish for special requirements concerning gloss retention. With IGP-DURA<sup>clean</sup> effect.

#### 59 line, HWF<sup>classic</sup>

The tried and tested, highly weather resistant powder varnish for increased UV-resistance for facades. Using IGP-DURA<sup>clean</sup> effect.

### IGP-DURA<sup>face</sup>

#### 58 line

Weather-resistant polyester powder varnish for facades, using innovative IGP-DURA<sup>clean</sup> effect.

#### 80 line

Weather-resistant polyurethane powder for facades specially suited for exhalating substrates.

### IGP-DURA<sup>xal</sup>

#### 42 line

See Specialties

## Exterior Industrial

### IGP-DURA<sup>pol</sup>

#### 62, 64, 65 line

Weather-resistant polyester powder for industrial applications in different gloss shades, structures and effects.

#### 68 line

Low-bake polyester powder for industrial applications.

### IGP-DURA<sup>than</sup>

#### 81 line

Weather-resistant polyurethane powder, for decorative and industrial applications.

## Interior

### IGP-DURA<sup>pox</sup>

#### 02 line

Epoxy powder, with a very good resistance to chemicals.

#### 08 line

Low temperature epoxy powder with very good resistance to chemicals.

### IGP-DURA<sup>mix</sup>

#### 31, 33, 35, 37, 39 line

High-class polyester-epoxy mixed powder in different gloss levels, structures and effects.

#### 38 line

Low temperature powder varnish for coating MDF, glass, synthetics and metals in smooth and structured surfaces.

## Specialties

### IGP-DURA<sup>cryl</sup>

#### 40 line

Compatible, weather resistant acrylic powder with exceptional antigraffiti properties (test certificate Dr. Kupfer).

### IGP-DURA<sup>xal</sup>

#### 42 line

Extremely weather resistant acrylic copolymer powder for a deep-matt and elegant surface.

#### 46 line

Deep-matt industrial powder on the basis of acrylic copolymer resins for a deep-matt and elegant surface.

### IGP-KORROPRIMER

#### 10 line

Anti-corrosive priming powder for steel and aluminium substrates. V-line recommended for exhalating (galvanised) substrates.

#### 18 line

Anti-corrosive low-bake priming powder for steel.

#### 30 line

Anti-corrosive priming powder for aluminium substrates.

### IGP-HWF<sup>thermofer</sup>

#### 53 line

Extremely weather-resistant powder varnish for highly expressive decorative effects with thermo-transfer foil technology.

# Standard qualities and surface-aspects

Code	Surface	Gloss Level	Effect	Exterior Facades						Exterior Industrial					Interior									Specialties									
				PFC		HWF		DURA® <i>face</i>		DURA® <i>pol</i>				DURA® <i>than</i>	DURA® <i>pox</i>			DURA® <i>mix</i>						Specialties									
				91	59	57	52	58	80	62	64	65	68		81	02	08	31	33	35	37	38	39	10	18	30	40	42	46	53			
01A	Smooth	Dull matt																			10					10				10	10		
01E	Smooth	Dull matt	Pearl mica																												10	10	
02A	Smooth	Matt								20				20										20								20	
02D	Smooth	Matt	Metallic							20														20									
02E	Smooth	Matt	Pearl mica																					20									
02P	Smooth	Matt	METALLIC® <i>pearl</i>																					20									
03A	Smooth	Matt		30	30	30				30													30	30							30		
03B	Smooth	Matt	Transparent		30																			30									
03D	Smooth	Matt	Metallic							30														30	30								
03E	Smooth	Matt	Pearl mica	30	30	30				30													30	30							30		
03G	Smooth	Matt	Transparent, Pearl mica		30																												
03H	Smooth	Matt	Crystal Color		30			30																									
03P	Smooth	Matt	METALLIC® <i>pearl</i>							30														30									
04A	Smooth	Silk matt																						40									
04B	Smooth	Silk matt	Transparent																					40								40	
04E	Smooth	Silk matt	Pearl mica																					40									
05A	Smooth	Silk matt								50														50									
05B	Smooth	Silk matt	Transparent					50				50																					
05D	Smooth	Silk matt	Metallic																					50									
05E	Smooth	Silk matt	Pearl mica																					50									
05P	Smooth	Silk matt	METALLIC® <i>pearl</i>																					50									
07A	Smooth	Silk gloss		75	75	75	75	75				75	75	75	75		75	75			75	75		75	75					75			
07D	Smooth	Silk gloss	Metallic							75	75	75											75	75									
07E	Smooth	Silk gloss	Pearl mica	75	75		75	75									75	75					75								75		
07H	Smooth	Silk gloss	Crystal Color				75																										
07P	Smooth	Silk gloss	METALLIC® <i>pearl</i>																					75									
09A	Smooth	Gloss		>85	>85		>85	>85		>85	>85	>85				>85	>85			>85				>85					>85		>85		
09B	Smooth	Gloss	Transparent	>85	>85			>85						>85									>85	>85									
09D	Smooth	Gloss	Metallic	>85			>85	>85		>85	>85	>85											>85	>85									
09E	Smooth	Gloss	Pearl mica																				>85								>85		
09G	Smooth	Gloss	Transparent, Pearl mica					>85																									
09P	Smooth	Gloss	METALLIC® <i>pearl</i>							>85													>85										
1MA	Fine structure	Matt		•	•	•		•		•	•	•		•								•								•			
1MB	Fine structure	Matt	Transparent																													•	
1MC	Fine structure	Matt	Speckled							•	•												•		•								
1MD	Fine structure	Matt	Metallic							•														•		•							
1ME	Fine structure	Matt	Pearl mica	•	•	•	•	•		•		•											•		•						•		
1MH	Fine structure	Matt	Crystal Color		•																												
1MP	Fine structure	Matt	METALLIC® <i>pearl</i>																						•								
1SA	Fine structure	Silk gloss								•													•								•		
2MA	Coarse structure	Matt								•													•										
2MD	Coarse structure	Matt	Metallic							•														•									
2ME	Coarse structure	Matt	Pearl mica																					•									
2SA	Coarse structure	Silk gloss								•													•	•	•						•		
2SD	Coarse structure	Silk gloss	Metallic																					•									
2SE	Coarse structure	Silk gloss	Pearl mica							•														•	•							•	
3MD	Hammerschlag	Matt	Metallic																				•										
3SA	Coarse structure	Silk gloss									•																						
3SD	Hammerschlag	Silk gloss	Metallic																					•									
4MA	Fine structure	Matt																							•								
4MD	Fine structure	Matt	Metallic																						•								
4ME	Fine structure	Matt	Pearl mica																						•								
4TA	Fine structure	Dull matt																							•								
5MA	Coarse structure	Matt																								•							
5SA	Coarse structure	Silk gloss								•																•		•					

Other effects and structures on request. Please observe the minimum quantity requirements when placing your order.

**Gloss data:** Reflectometer values with 60°, according to ISO 2813. Tolerances in accordance with corresponding technical data sheets.

• **Gloss determination:** by limit value samples.

# Which powder coat for which product?

	Exterior Facade			Exterior Industrial		Interior			Specialties			
	IGP-PFC	IGP-HWF	IGP-DURA® <i>face</i>	IGP-DURA® <i>pol</i>	IGP-DURA® <i>thian</i>	IGP-DURA® <i>pox</i>	IGP-DURA® <i>mix</i>	IGP-DURA® <i>mix</i> - Low temperature powder	IGP-KORROPRIMER	IGP-DURA® <i>cryl</i>	IGP-HW <i>Ethermofer</i>	IGP-DURA® <i>xal</i>
Advertising Boards			•									•
Agricultural Machines				•	•						•	•
Automobile Accessories (Inside)				•	•	•	•				•	
Automobile Accessories (Outside)	•	•	•	•						•		
Awnings			•									
Balcony Railings	•	•	•		•							•
Banisters			•	•	•							•
Bathroom Furniture							•				•	
Bicycles			•	•	•						•	
Blinds, Aluminium	•	•	•								•	
Boiler Lagging				•			•				•	
Bottles					•							
Catering Equipment							•				•	
Ceiling Tiles							•					•
Dishwashing Machines							•			•	•	
Display Stands							•				•	•
Drawer Guides							•					•
Facade Technology	•	•	•						•			•
Fittings, Water, Gas						•						
Frames			•		•		•					•
Garden Furniture			•	•	•							
Glass	•	•	•	•	•		•	•			•	
Gutters	•	•	•									
Hospital Furniture							•			•	•	•
Household Appliances							•				•	•
Kitchen Furniture							•			•		•
Laboratory Equipment						•				•		
Lamps			•	•	•		•					•
Lawnmowers				•	•							
Letterboxes			•							•	•	•
MDF								•				
Motor Housings			•	•	•							
Motorcycle Accessories			•	•	•							
Mountings				•	•		•					
Office Furniture, Accessories							•				•	•
Outlet Fittings					•		•					•
Plastics							•	•				
Radiators							•				•	•
Refrigerators							•			•	•	
Roller Shutters, Aluminium	•	•	•							•	•	
Sanitary Equipment					•	•	•			•		
Shop Construction							•				•	•
Shower Installations							•					
Steel Reinforcing Bars						•						
Toilet Boxes							•					
Tractor Cabins			•	•								
Washing Machines							•			•		
White Boards										•		
Window Sills/Profiles	•	•	•							•	•	•
Winter Gardens, Steel, Alu	•	•	•		•				•			•
Wire Goods							•					

This information is intended as a guide. The exact specific data and features of the individual coating powders are to be found in the detailed technical data sheets.

# IGP Pulvertechnik AG – benefit from our expertise

Allow yourself to be inspired; we will turn your ideas into a reality. Thanks to innovative and high-quality powder coating systems for architecture and industry, individual colour consulting, innovation and first-class services.

## IGP-COLOR&DESIGN®solutions

The IGP service system for individual color design is easy to define. The service concept is made up of four components which you need to implement your ideas – product systems, services, color consulting, along with inspiration and networking.

## IGP Services

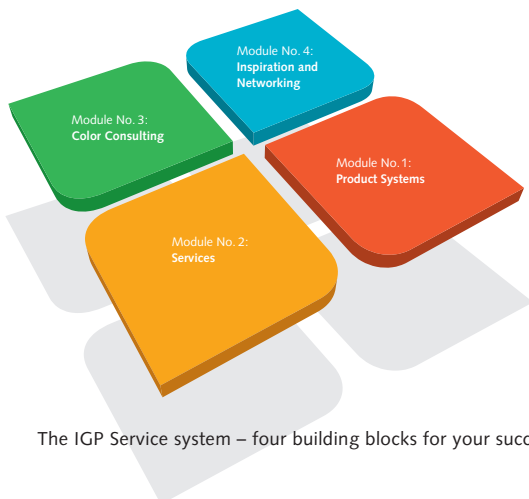
With IGP services, which are divided up into five core areas – specialist consulting, testing technology, quality assurance, training centre, and sampling/supply – we have developed a comprehensive service catalogue for you. From conception, through to the implementation of your items, you are faced with the most multifarious of questions in connection with color schemes, surface finishes, anti-corrosion etc.

Request the IGP Service Catalogue. It provides you with the right answers and solutions for your ambitious projects in the form of consultation, sampling and tests in the laboratory and in the field.



Take advantage of our range of services. Request a copy of our IGP service catalogue.

Tel. +41 (0)71 929 81 11  
info@igp.ch



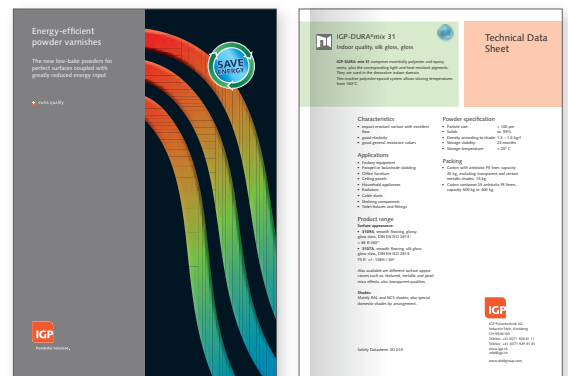
The IGP Service system – four building blocks for your success

## Information and communication platform

Discover your own customised IGP world in the Internet. The information and communication platform [www.igp.ch](http://www.igp.ch) offers you all the support you require. In addition to information about the company, the download area provides a quick and convenient means of downloading all IGP brochures. All technical information and safety notes are available in the products area. This enables you to access important information and new items quickly and easily.

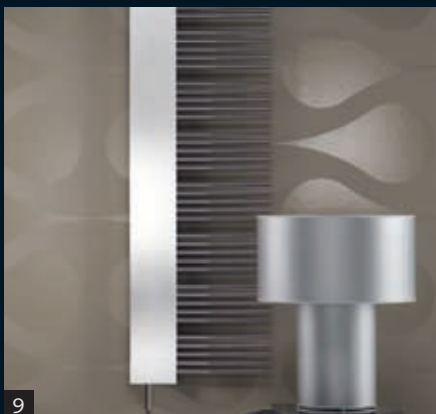
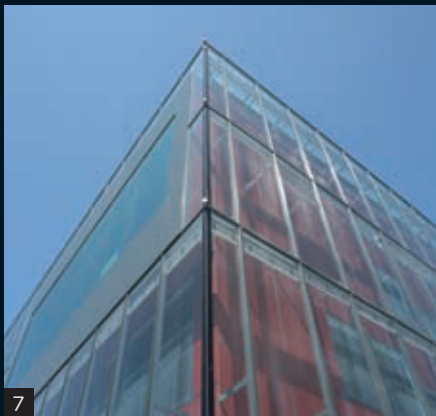


Comprehensive download  
area for product information  
[www.igp.ch](http://www.igp.ch)



Download brochures ([www.igp.ch/service](http://www.igp.ch/service)) and technical documentation ([www.igp.ch/produkte](http://www.igp.ch/produkte)) simply and conveniently.

# IGP powder coating system – as individual as your ideas



## Legend

IGP Hauptsitz (Titelseite)

Rivergate, Wien (1)

KTM (2)

Lista Office (3)

Zumtobel (4)

Stadler Rail (5)

Gallus Ferd. Rüsch AG (6)

Phillip Morris, Lausanne (7)

Helvetia, St.Gallen (8)

Zehnder (9)

## Group Companies

### Austria

IGP Pulvertechnik GesmbH  
Wienerstrasse 99  
AT-2514 Traiskirchen  
Phone +43 (0)2252 508046  
Fax +43 (0)2252 508046 14  
verkauf@igpulver.at

### Benelux

IGP Benelux BV  
Postbus 40279  
NL-8004 DG Zwolle  
Phone +31 38 4600695  
Fax +31 38 4600696  
info@igpbenelux.nl  
www.igpbenelux.nl

### France

IGP Pulvertechnik Sarl  
Bâtiment EUROPA 1 – Site d'Archamps  
FR-74160 Archamps  
Phone +33 (0)4 50 95 35 10  
Fax +33 (0)4 50 95 30 15  
ig.poudre@wanadoo.fr

### Germany

IGP Pulvertechnik Deutschland GmbH  
Dieselstrasse 7, DE-84030 Landshut  
Postfach 1565, DE-84003 Landshut  
Phone +49 (0)871 7609 430  
Fax +49 (0)871 7609 470  
verkauf@ig-pulver.de

### Denmark

IGP Market Manager  
Jørgen Andreasen  
Mobil: +45 238 499 99  
jorgen.andreasen@igp.ch

### Great Britain

IGP UK  
Unit 8, Yate Campus  
10 North Rd, Yate  
GB-Bristol, BS37 7PA  
Phone +44 (0)1454 800 020  
Fax +44 (0)1454 318 072  
enquiries@igpuk.com

### Hungary

IGP Hungary Kft.  
Bercsényi M. u. 14.  
HU-6000 Kecskemét  
Phone +36 76 507 974  
Fax +36 76 507 975  
info@igphungary.hu  
www.igphungary.hu

### Poland

IGP Pulvertechnik Polska Sp. z o.o.  
ul. Łąkowa 3  
PL-05-822 Milanówek  
Phone +48 22 724 94 49  
Phone/Fax +48 22 758 31 83  
Fax +48 22 758 37 98  
igp@igp.pl  
www.igp.pl

### Sweden

IGP Market Manager  
Björn Greiff  
Mobil: +46 (0)722 33 88 08  
bjorn.greiff@igp.ch

## Distribution Partners

### Belarus

Agrisovgas-Bel  
Kuprevich St. 2  
BY-220040 Minsk  
Phone +375 17 202 99 56  
Fax +375 17 202 99 90  
igp@telecom.by

### Bulgaria

Ultracoating Ltd  
Galileo Galilei Bl. 251 Vh. G  
BG-1113 Sofia  
Phone +359 2 490 0075  
Fax +359 2 870 6349  
ultracoating@abv.bg

### Czech Republic/Slovakia

OK Color spol. s.r.o.  
F.V. Veselého 2760  
CZ-193 00 Praha 9  
Phone +420 283 881 252  
Fax +420 286 891 097  
praha@okcolor.cz

### Lithuania

UAB GeoSiluma  
Zilviciu g. 17  
LT-53272 Teleiciu km., Kauno r.  
Phone +3703 7 291 244  
Fax +3703 7 291 244

### Romania

S.C. Paint Art S.R.L.  
Str. Gorjului nr. 5, sc. C, ap. 26  
RO-550063 Sibiu  
Phone +40 (0)269 21 49 15  
Fax +40 (0)269 21 49 15  
office@paintart.ro

### Serbia

Matic Engineering  
Sedam sekretara SKOJ-a 40  
34000 Kragujevac  
Phone +38134300170  
Phone +38134300171  
prmatic@matic.rs  
www.matic.rs

### Slovenia/Bosnia

PROSET Segovci d.o.o.  
Segovci 1b  
SI-9253 Apace  
Phone +386 2 569 8140  
Fax +386 2 569 8141  
info@proset.si  
www.proset.si

### Search for international distribution partners!

More information [www.igp.ch](http://www.igp.ch)



**Powderful Solutions.**

IGP Pulvertechnik AG  
Industrie Stelz, Kirchberg  
9500 Wil  
Switzerland  
Phone +41 (0)71 929 81 11  
Fax +41 (0)71 929 81 81  
www.igp.ch · info@igp.ch

[www.doldgroup.com](http://www.doldgroup.com)